

Fig No. MD-22J-10K

1-1/2" - 10" (DN40- DN250)



Feature :

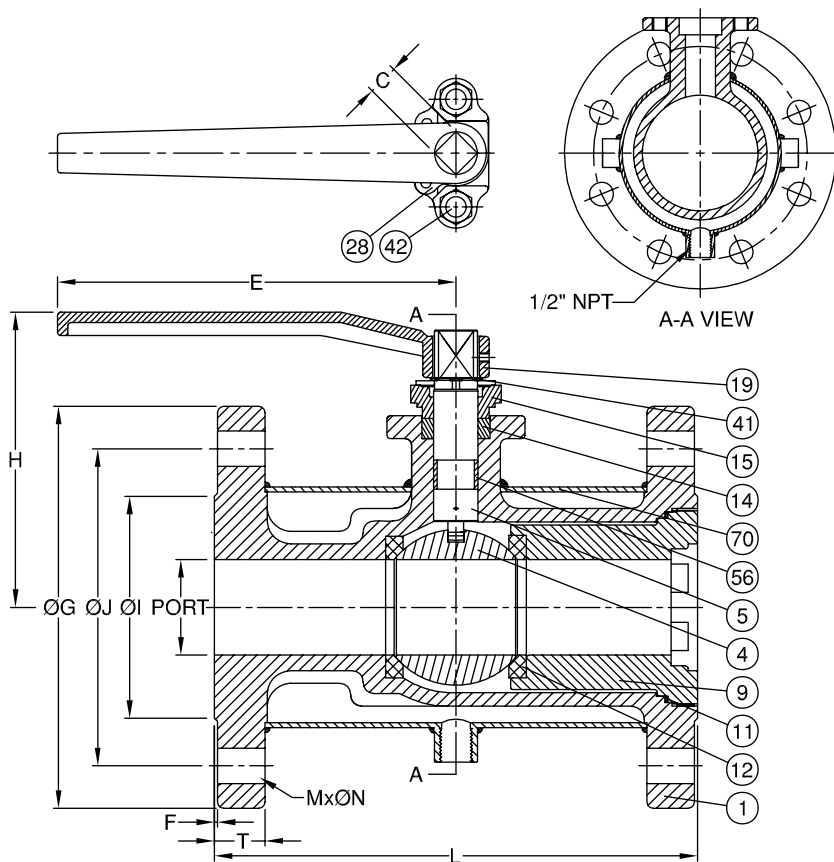
- Investment Casting Component
- ISO 5211 mounting flange
- Blow-out-proof stem, Anti-Static Design
- For General Chemical and Industrial application
- Cast Bosses For Bleed / Drain Port.

Standard Compliance:

- Design : B16.34
- Face to face : JIS B2002
- Flange dimension : JIS 2010
- Body Material : SCS 14A
- Pressure testing : EN 12266-1/ API 598

Specifications :

- End connection : Flange RF
- Working pressure : 10KGS (CWP)
- Temperature : -20 ~220°C



MATERIALS LIST

NO.	PART NAME	MATERIAL
1	BODY	SCS14
4	BALL	ASTM A351 Gr.CF8M
5	STEM	SS316
9	INSERT CAP	SCS14
11	BODY SEAL	50%PTFE.+50%S.S.
12	SEAT	50%PTFE.+50%S.S.
14	STEM PACKING	50%PTFE.+50%S.S.
15	GLAND	ASTM A351 Gr.CF8M
19	HANDLE	FCD45
28	STOP PLATE	SS304
41	SNAP RING	SS304
42	GLAND BOLT	SS304
56	BEARING	50%PTFE.+50%S.S.
70	JACKET	SS304

DIMENSIONS

unit:mm

SIZE	PORT	L	E	H	C	OG
DN40xDN15	1-1/2" x 1/2"	15	120	150	127	140
DN40xDN20	1-1/2" x 3/4"	20	120	150	133	140
DN50xDN25	2" x 1"	25	130	150	137	155
DN65xDN40	2-1/2" x 1-1/2"	40	165	240	155	175
DN80xDN50	3" x 2"	50	180	240	177	185
DN100xDN65	4" x 2-1/2"	65	190	320	184	210
DN125xDN80	5" x 3"	80	200	320	184	250
DN150xDN100	6" x 4"	100	230	400	235	280
DN250xDN150	10" x 6"	150	340	515	280	400

SIZE	OJ	OI	T	F	M	ON
DN40xDN15	1-1/2" x 1/2"	105	85	16	2.0	4
DN40xDN20	1-1/2" x 3/4"	105	85	16	2.0	4
DN50xDN25	2" x 1"	120	100	16	2.0	4
DN65xDN40	2-1/2" x 1-1/2"	140	120	18	2.0	4
DN80xDN50	3" x 2"	150	130	18	2.0	8
DN100xDN65	4" x 2-1/2"	175	155	18	2.0	8
DN125xDN80	5" x 3"	210	185	20	2.0	8
DN150xDN100	6" x 4"	240	215	22	2.0	8
DN250xDN150	10" x 6"	355	325	24	2.0	12