

Fig No. MD-27 Full Bore
1/2" ~ 6" DN15 ~ DN150



Feature :

- Investment Casting Component
- ISO 5211 mounting Flange
- Blow-out-proof stem, Anti-Static Design
- For General Chemical and Industrial application
- Carbon steel or Super Alloy upon request

Standard Compliance:

- Body wall thickness : B16.34
- Face to Face : ANSI B16.10 Class 150
- Flange Dimension : ANSI B16.5 Class 150
- Finish : 125- 250 AARH
- Body Material : ASTM A351
- Pressure testing : EN12266

Standard Compliance:

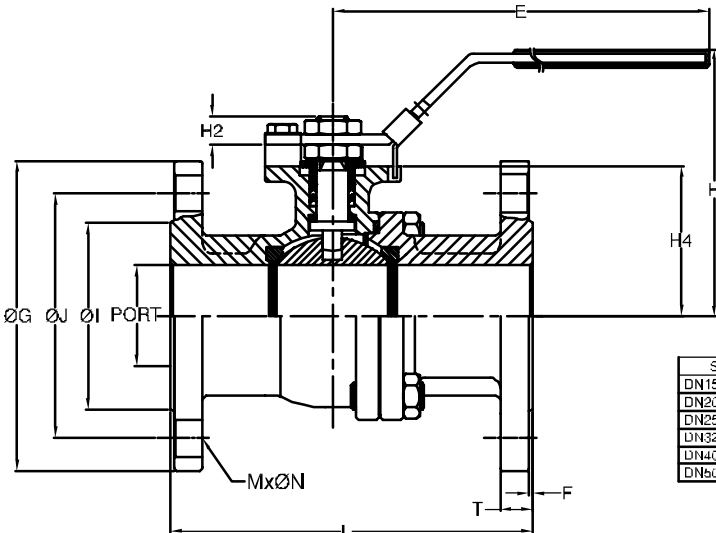
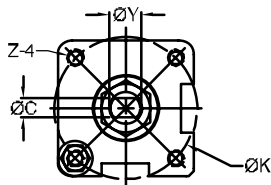
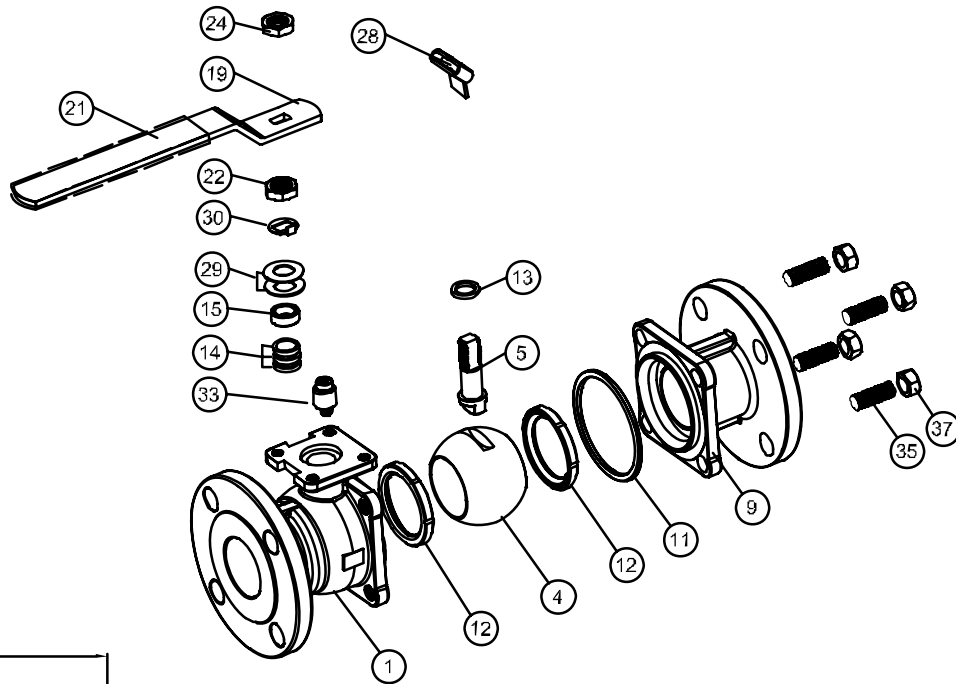
- End connection : Flange RF
- Working pressure : 275 psi (CWP)
- Temperature : -20 ~ 180° C

Option :

- API 607 fire safe design

MATERIALS LIST

| NO. | PART NAME | MATERIAL |
|-----|-------------------|-------------------|
| 1 | BODY | ASTM A351 Gr.CF8M |
| 4 | BALL | ASTM A351 Gr.CF8M |
| 5 | STEM | SS316 |
| 9 | END CAP | ASTM A351 Gr.CF8M |
| 11 | BODY SEAL | PTFE. |
| 12 | SEAT | RTFE. |
| 13 | THRUST WASHER | PTFE. |
| 14 | STEM PACKING | PTFE. |
| 15 | GLAND BUSH | SS304 |
| 19 | HANDLE | SS304 |
| 21 | HANDLE COVER | PLASTIC |
| 22 | STEM NUT | SS304 |
| 24 | HANDLE NUT | SS304 |
| 28 | LOCKING PAD | SS304 |
| 29 | BELLEVILLE WASHER | SS301 |
| 30 | TAB WASHER | SS304 |
| 33 | STOP PIN | SS304 |
| 35 | BODY BOLT | ASTM A193 Gr.B8 |
| 37 | BOLT NUT | ASTM A194 Gr.8 |



DIMENSIONS

| SIZE | PORT | L | E | H | H2 | H4 | C | ØY | ØG | ØJ | ØI | T | F | M | ØN | ØK | Z | |
|------|--------|------|-------|-------|-------|------|------|-----|------|-------|-------|------|------|-----|----|------|------|----------|
| DN15 | 1/2" | 15.0 | 108.0 | 132.0 | 80.0 | 8.5 | 38.5 | 6.4 | 9.6 | 88.0 | 60.5 | 35.0 | 11.2 | 1.6 | 4 | 16.0 | 42.0 | M5*0.8P |
| DN20 | 3/4" | 20.0 | 117.0 | 132.0 | 84.5 | 8.5 | 42.5 | 6.4 | 9.6 | 98.6 | 70.0 | 43.0 | 12.7 | 1.6 | 4 | 16.0 | 42.0 | M5*0.8P |
| DN25 | 1" | 25.0 | 127.0 | 166.0 | 102.0 | 12.0 | 52.0 | 8.0 | 11.2 | 108.0 | 79.2 | 51.0 | 14.3 | 1.6 | 4 | 16.0 | 50.0 | M6*1.0P |
| DN32 | 1 1/4" | 32.0 | 140.0 | 166.0 | 105.0 | 12.0 | 55.0 | 8.0 | 11.2 | 117.5 | 88.9 | 63.5 | 15.9 | 1.6 | 4 | 16.0 | 50.0 | M6*1.0P |
| DN40 | 1 1/2" | 38.0 | 165.0 | 198.0 | 125.0 | 12.0 | 65.3 | 9.5 | 16.0 | 127.0 | 98.6 | 73.2 | 17.5 | 1.6 | 4 | 16.0 | 70.0 | M8*1.25P |
| DN50 | 2" | 50.0 | 178.0 | 198.0 | 132.0 | 12.0 | 73.8 | 9.5 | 16.0 | 152.5 | 120.7 | 92.0 | 19.1 | 1.6 | 4 | 18.0 | 70.0 | M8*1.25P |

Fig No. MD-27 Full Bore
1/2" ~ 6" DN15 ~ DN150



Feature :

- Investment Casting Component
- ISO 5211 mounting Flange
- Blow-out-proof stem, Anti-Static Design
- For General Chemical and Industrial application
- Carbon steel or Super Alloy upon request

Standard Compliance:

- Body wall thickness : B16.34
- Face to Face : ANSI B16.10 Class 150
- Flange Dimension : ANSI B16.5 Class 150
- Finish : 125- 250 AARH
- Body Material : ASTM A351
- Pressure testing : EN12266

Standard Compliance:

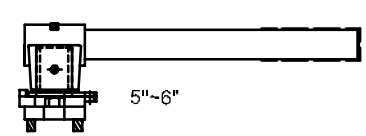
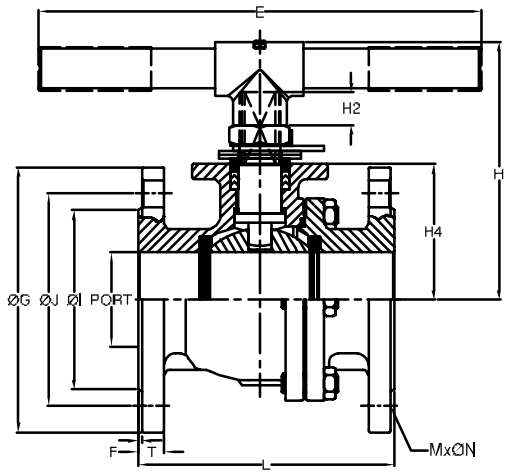
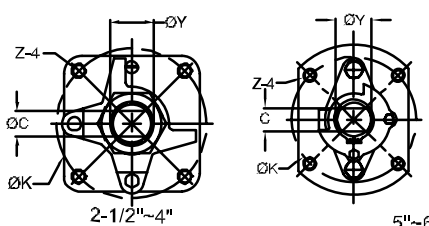
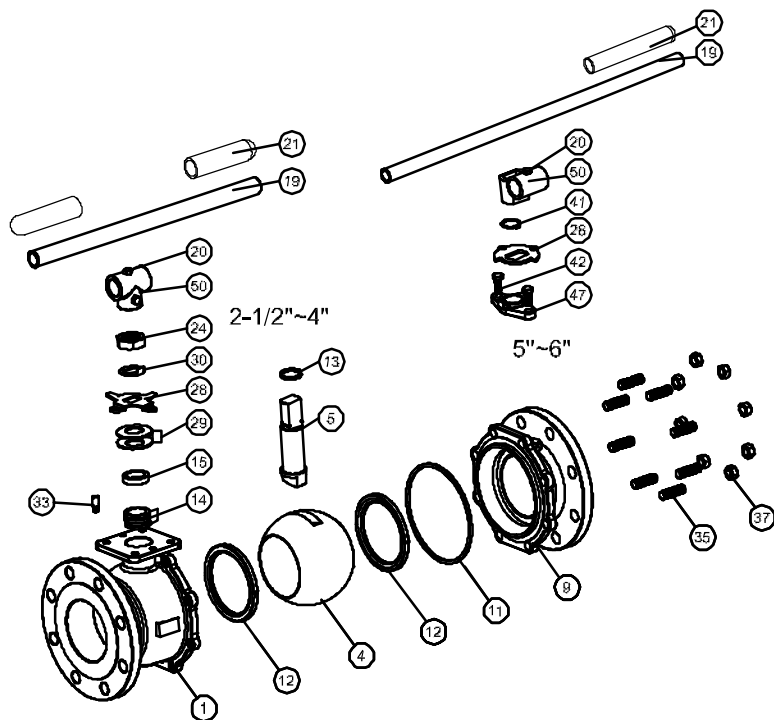
- End connection : Flange RF
- Working pressure : 275 psi (CWP)
- Temperature : -20 ~ 180° C

Option :

- API 607 fire safe design

MATERIALS LIST

| NO. | PART NAME | MATERIAL |
|-----|-------------------|-------------------|
| 1 | BODY | ASTM A351 Gr.CF8M |
| 4 | BALL | ASTM A351 Gr.CF8M |
| 5 | STEM | SS316 |
| 9 | END CAP | ASTM A351 Gr.CF8M |
| 11 | BODY SEAL | PTFE. |
| 12 | SEAT | RTFE. |
| 13 | THRUST WASHER | PTFE. |
| 14 | STEM PACKING | PTFE |
| 15 | GLAND BUSH | SS304 |
| 19 | HANDLE | LRON |
| 20 | SET BOLT | SS304 |
| 21 | HANDLE COVER | PLASTIC |
| 24 | HANDLE NUT | SS304 |
| 28 | STOP PLATE | SS304 |
| 29 | BELLEVILLE WASHER | SS301 |
| 30 | TAB WASHER | SS304 |
| 33 | STOP PIN | SS304 |
| 35 | BODY BOLT | ASTM A193 Gr.B8 |
| 37 | BOLT NUT | ASTM A194 Gr.B |
| 41 | SNAP RING | SS304 |
| 42 | GLAND BOLT | SS304 |
| 47 | GLAND FLANGE | SS304 |
| 50 | HANDLE ADAPTER | ASTM A351 Gr.CF8 |



DIMENSIONS

| SIZE | PORT | L | E | F | H1 | H2 | H4 | C | ØY | ØG | ØJ | ØI | T | F | M | ØN | ØK | Z |
|-------|--------|-------|-------|-------|-------|-------|------|-------|------|------|-------|-------|------|------|-----|------|------|-----------|
| DN55 | 2 1/2" | 94.0 | 190.0 | 300.0 | 178.0 | --- | 23.0 | 22.5 | 17.0 | 28.0 | 177.8 | 139.7 | Ø4.7 | 23.3 | 1.6 | 19.0 | Ø2.0 | M 0*1.5P |
| DN80 | 3" | 76.0 | 203.0 | 300.0 | 188.0 | --- | 23.0 | Ø1.7 | 17.0 | 28.0 | 190.5 | 152.4 | Ø7.0 | 23.9 | 1.6 | 19.0 | Ø2.0 | M 0*1.5P |
| DN100 | 4" | 100.0 | 229.0 | 420.0 | 202.0 | --- | 23.0 | Ø1.0 | 17.0 | 28.0 | 228.6 | 191.0 | Ø7.0 | 23.9 | 1.6 | 19.0 | Ø2.0 | M 0*1.5P |
| DN125 | 5" | 125.0 | 325.0 | 600.0 | --- | 233.0 | 75.0 | 163.0 | 23.0 | 36.0 | 254.0 | 216.0 | Ø8.0 | 24.5 | 1.6 | 19.0 | Ø2.0 | M12*1.75P |
| DN150 | 6" | 150.0 | 392.0 | 900.0 | --- | 269.0 | 75.0 | 182.5 | 23.0 | 36.0 | 273.4 | 241.3 | Ø8.0 | 25.4 | 1.6 | 19.0 | Ø2.0 | M12*1.75P |