

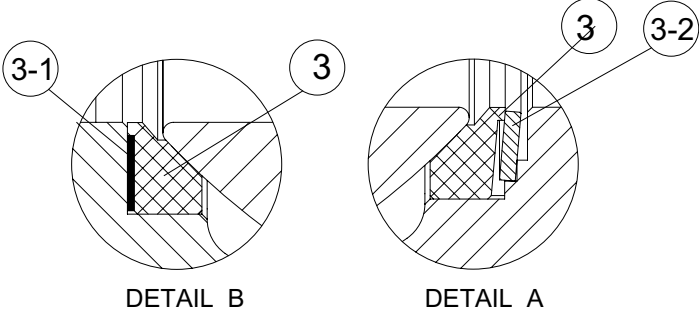
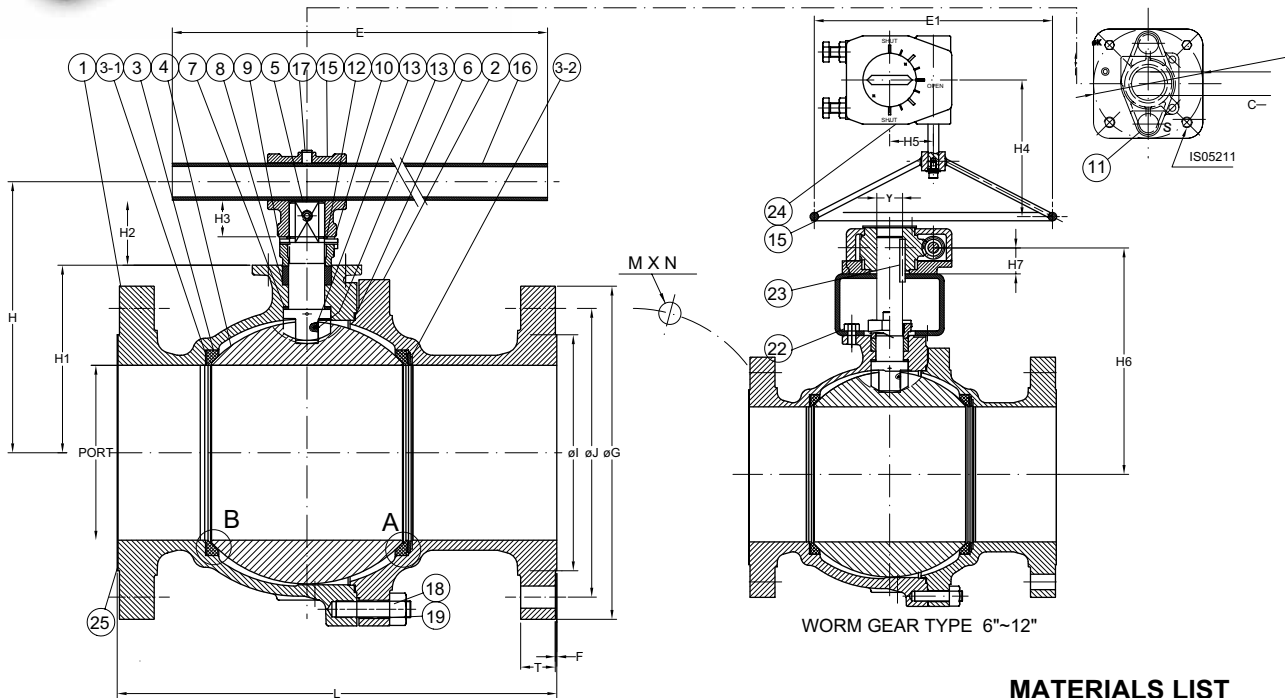


Two Piece Floating Type Metal Seated Flanged Ball Valves, Full Bore, ANSI Class 300

Fig No: MD-52Q-300 Full Bore
1-1/2" ~ 12" DN40 ~ DN300



Split body design , allows the use of advanced spiral - wound gaskets.
 Blowout - proof stem
 All valves with graphite packing and backup seal are inherently fire safe
 Ball and seats lapped for optimum performance and tight shutoff
 Wall thickness : AMSE/ANSI B16.34 CLASS 150 full port only
 Flanged dimensions : ANSI B16.5 Class 150
 Face to Face : ANSI B16.10 Class 150 RF
 Pressure-Temperature Rating : ASME B16.34
 Tightness rates : ΔP : ASME / FCI 70-2 Class IV
 Temperature limitation $\leq 350^{\circ} \text{c}$



MATERIALS LIST

NO.	PARTS NAME	MATERIALS		
1	BODY	ASTM A216-WCB	ASTM A351-CF8	ASTM A351-CF8M
2	END CAP	ASTM A216-WCB	ASTM A351-CF8	ASTM A351-CF8M
3	SEAT	ASTM A276-304+STL6#	ASTM A276-304+STL6#	ASTM A276-316+STL6#
3-1	SEAT WASHER	GRAFOIL		
3-2	SPRING WASHER	ASTM A240-301		
4	BALL	ASTM A351-CF8+HCr		ASTM A351-CF8M+HCr
5	STEM	ASTM A276-304		ASTM A276-316
6	BODY SEAL	GRAFOIL		
7	THRUST WASHER	GRAFOIL		
8	STEM PACKING	GRAFOIL		
9	GLAND FLANGE	ASTM A351-CF8		
10	STOPPER	ASTM A176-304		
11	HX. SOCKET CAP SCREW	ASTM A193-B8		
12	C-RING	S.S. 304		
13	PLUNGER SPRING+ANTI-STATIC BALL	STAINLESS STEEL		
15	HANDLE	ASTM A536/A216-WCB		
16	STEEL PIPE	ASTM A53		
17	SET SCREW	ASTM A193-B8		
18	BODY BOLTT	A193-B7		ASTM A193-B8
19	BOLT NUT	A194-2H		ASTM A194-8
22	HX. BOLTT	A193-B7		ASTM A193-B8
23	KEY	ASTM A108-1045		
24	WORM GEAR BOX.	ASTM A536		
25	END COVER	P.E.		

DIMENSIONS

UNIT: m.m.

SIZE	PORT	L	E	E1	H	H1	H2	H3	H4	H5	H6	H7	C	Y	eG	eJ	eI	T	F	M	N	eK	ISO 5211	WG TYPE
1-1/2"	40.0	190.5	250.0	—	121.0	66.0	42.0	25.0	—	—	—	—	12.0	e19	155.5	114.3	73.2	14.5	1.6	4	22.2	70.0	F07	—
2"	50.0	215.9	250.0	—	129.0	73.5	42.0	25.0	—	—	—	—	12.0	e19	165.1	127.0	92.0	16.0	1.6	8	19.1	70.0	F07	—
3"	80.0	282.5	350.0	—	166.0	103.0	48.0	30.0	—	—	—	—	17.0	e25	209.6	168.2	127.0	19.1	1.6	8	22.2	102.0	F10	—
4"	100.0	304.8	500.0	—	199.0	123.5	61.0	40.0	—	—	—	—	23.0	e35	254.0	200.2	157.2	23.8	1.6	8	22.2	102.0	F10	—
6"	150.0	403.4	800.0	457.0	275.0	178.5	91.0	40.0	261.0	81.0	312.0	45.0	26.0	e40	317.5	269.9	215.9	25.4	1.6	12	22.2	125.0	F12	WG1
8"	200.0	501.7	1100.0	457.0	310.0	214.5	72.5	40.0	261.0	81.0	348.0	45.0	26.0	e40	381.0	330.2	269.8	28.6	1.6	12	25.4	125.0	F12	WG1
10"	250.0	568.5	1100.0	457.0	356.0	257.0	77.0	45.0	261.0	81.0	390.0	45.0	30.0	e50	444.5	387.4	323.9	30.2	1.6	16	28.6	140.0	F14	WG1
12"	300.0	647.7	1100.0	457.0	395.0	296.0	77.0	45.0	310.0	112.0	452.0	68.0	30.0	e50	520.7	450.9	381.0	31.8	1.6	16	31.8	140.0	F14	WG2