

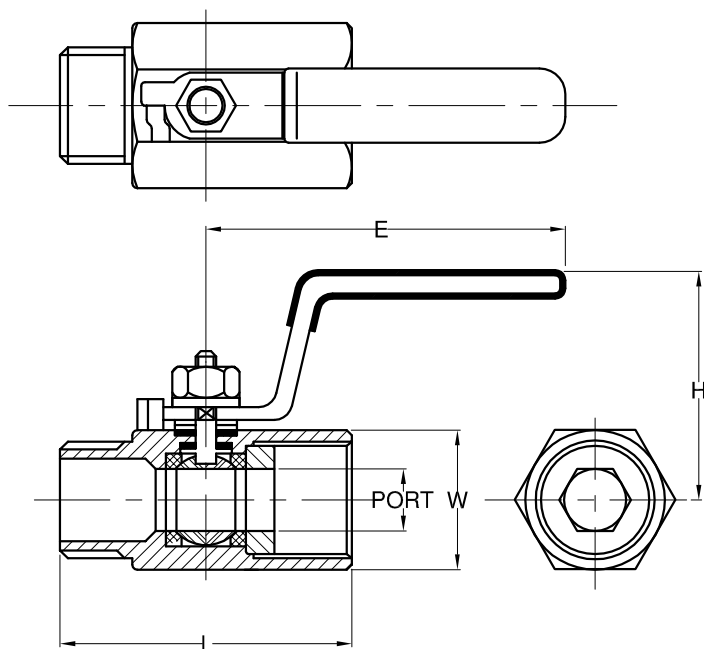
Fig No. V-010 H Reduced Bore
1/4" ~ 1" DN8 ~ 25



MATERIALS LIST

NO	PARTS NAME	MATERIAL
1	BODY	1.4408/EN03-1
4	BALL	SS316/CF8M
5	STEM	SS316
9	INSERT	1.4408/EN03-1
12	SEAT	PTFE.
13	THRUST WASHER	PTFE.
14	STEM PACKING	PTFE.
15	GLAND WASHER	SS304
19	HANDLE	SS304
21	HANDLE COVER	PLASTIC
23	HANDLE WASHER	SS304
24	HANDLE NUT	SS304

BALL - SS 316 1/4"-1/2" CF8M 3/4"-1"



Features :

One Piece Hex. body design, Male X Female end
Investment cast Component, Blow-out-proof Stem
For Industrial, chemical application
Carbon Steel & Super Alloy upon request

Standard Compliance :

Body wall thickness : EN 12516-1/3

Threaded end : BS 21 (BSP)

BSPT

ISO 228-1

DIN 2999

ISO7-1Rp

Face to Face : MD's Standard

Body Material : EN 1503-1

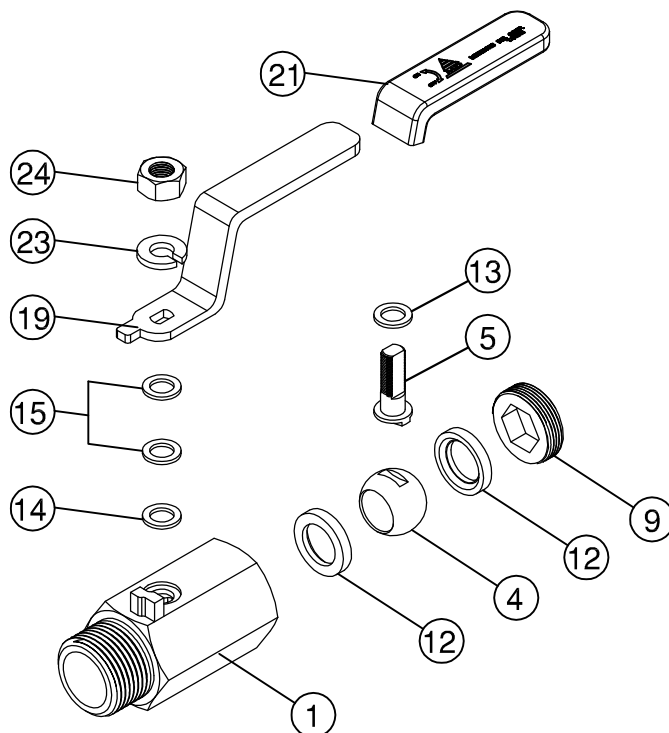
Pressure Testing : EN12266

Specification

End Connection : Threaded end (Male X Female)

Working Pressure : 40 Bar (CWP) for DN 8 - 25

Temperature : -20 ~ 180⁰ C



DIMENSIONS

		unit:mm				
SIZE	PORT	L	E	H	W	
DN8	1/4"	5.0	46.0	70.0	27.0	16.0
DN10	3/8"	7.2	51.0	81.0	28.5	21.5
DN15	1/2"	9.2	59.0	96.0	44.5	24.5
DN20	3/4"	12.5	62.5	96.0	46.0	32.0
DN25	1"	15.0	76.8	103.0	53.0	38.0