

**Fig No. V-109 Full Bore**  
**1/4" ~ 3" DN8 ~ 80**



**Features :**

Two Piece body design, Length according to DIN 3202 M3  
 Investment cast Component, Blow-out-proof Stem  
 For Industrial, chemical application  
 Carbon Steel & Super Alloy upon request

**Standard Compliance :**

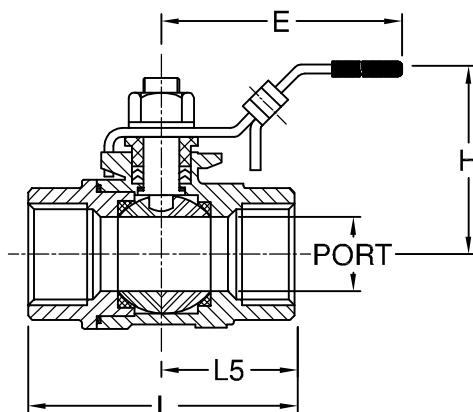
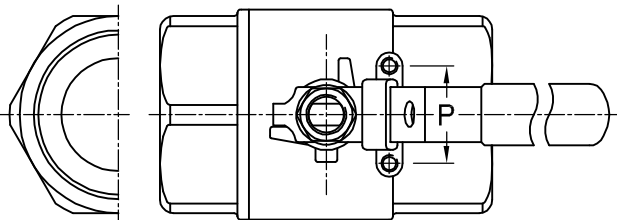
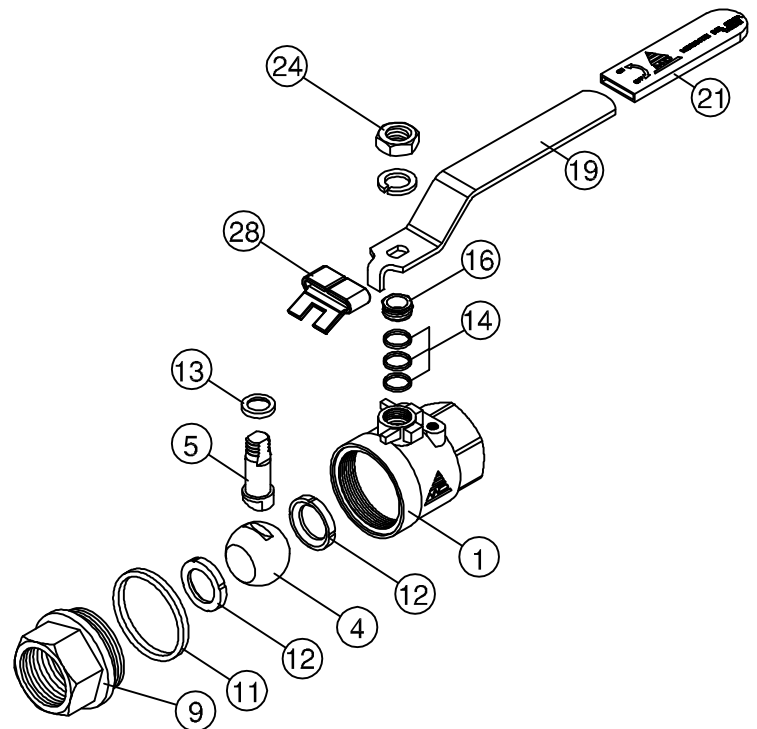
Body wall thickness : EN 12516-1/3  
 Threaded end : BS 21 ( BSP )  
 BSPT  
 ISO 228-1  
 DIN 2999  
 ISO7-1Rp  
 Face to Face : DIN 3202 M3  
 Body Material : EN 1503-1  
 Pressure Testing : EN12266

**Specification**

End Connection : Threaded end  
 Working Pressure : 63 Bar ( CWP ) for DN8-50  
 40 Bar ( CWP ) for DN65- 80  
 Temperature : -20 ~ 180° C

**MATERIAL LIST**

NO.	PART NAME	MATERIAL
1	BODY	1.4408/EN1503-1
4	BALL	ASTM A351 Gr.CF8M
5	STEM	SS316
9	END CAP	1.4408/EN1503-1
11	BODY SEAL	PTFE.
12	SEAT	RTFE.
13	THRUST WASHER	PTFE.
14	STEM PACKING	PTFE.
16	GLAND NUT	SS304
19	HANDLE	SS304
21	HANDLE COVER	PLASTIC
24	HANDLE NUT	SS304
28	LOCKING DEVICE	SS304



**DIMENSION**

SIZE	PORT	L	L5	E	H	P	unit:mm
DN8	1/4"	11.5	60.0	28.2	97.4	50.0	28.5
DN10	3/8"	12.5	60.0	28.2	97.4	50.0	28.5
DN15	1/2"	15.0	75.0	35.7	123.0	58.8	28.5
DN20	3/4"	20.0	80.0	40.2	123.0	62.5	35.0
DN25	1"	25.0	90.0	45.0	145.0	69.3	35.0
DN32	1-1/4"	32.0	110.0	53.4	145.0	76.0	38.0
DN40	1-1/2"	38.0	120.0	60.0	189.0	86.9	38.0
DN50	2"	50.0	140.0	69.5	189.0	95.0	38.0
DN65	2-1/2"	65.0	185.0	91.5	255.0	131.3	55.0
DN80	3"	80.0	205.0	102.7	261.0	140.6	55.0