

**Fig no. K-315L/T/X Full Bore**  
**1/2" ~ 3" DN 15 ~ DN 80**



**Features :**

Investment Casting, Four Seat & Screwed Body Design  
 Blow out proof stem, Direct Mounting to Actuator  
 360 degree rotation design  
 For Chemical, Industrial Application  
 Carbon Steel or Super Alloy upon request

**Standard Compliance :**

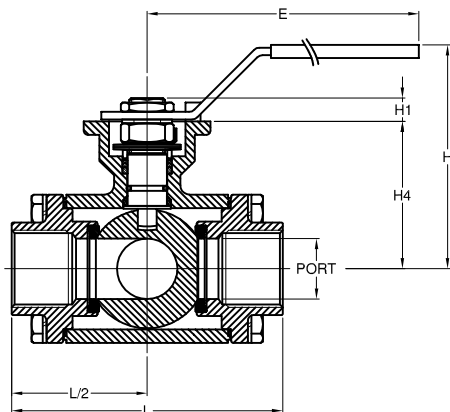
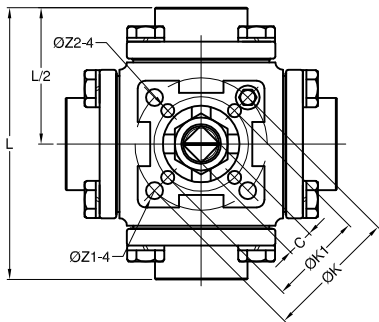
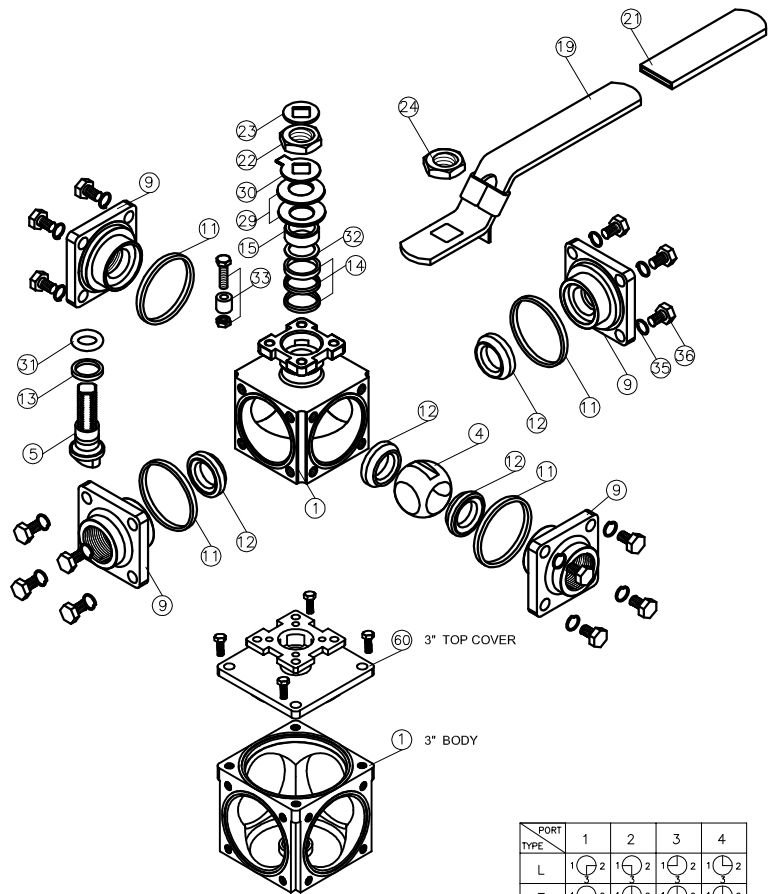
Body wall thickness : EN 12516-1/2/3  
 Threaded end : BS 21 (BSP)  
 BSPT  
 ISO 228-1G  
 DIN 2999  
 ISO 7-1Rp  
 Face to Face : MD's standard  
 Body material : EN1503-1  
 Pressure testing : EN 12266

**Specification :**

End connection : Threaded end  
 Working Pressure : 63 bar ( CWP )  
 Temperature : -20 to 180° C

**MATERIALS LIST**

NO.	PART NAME	MATERIAL
1	BODY	1.4408/EN1503-1
4	BALL	CF8M/EN1503-2
5	STEM	SS316
9	CAP	1.4408/EN1503-1
11	BODY SEAL	PTFE.
12	SEAT	PTFE.
13	THRUST WASHER	PTFE.
14	STEM PACKING	PTFE.
15	GLAND	SS304
19	HANDLE	SS304
21	HANDLE COVER	PLASTIC
22	STEM NUT	SS304
24	HANDLE NUT	SS304
29	BELLEVEILLE WASHER	SS410
30	STOP WASHER	SS304
31	O-RING	VITON
32	PACKING FOLLOWER	PTFE.+25%GF
33	STOP PIN	SS304
35	BOLT	SS304
36	BOLT WASHER	SS304
60	TOP COVER (3")	ASTM A351 Gr.CF8M



PORT TYPE	1	2	3	4
L	1/2	1/2	1/2	1/2
T	1/2	1/2	1/2	1/2
X	1/2	1/2		

**DIMENSIONS**

SIZE	PORT	L	E	H1	H	H4	C	ØK		Z1	Z2
								ØK	ØK		
DN15	1/2"	16.0	96.0	186.5	9.0	89.0	47.8	9.0	42.0	6.0	
									F04		
									F05		
DN20	3/4"	20.0	107.0	218.0	11.0	98.0	58.2	9.0	50.0	7.0	
									F05		
									F05		
DN25	1"	25.0	126.0	218.0	11.5	102.0	64.0	9.0	50.0	7.0	
									F05		
									F05		
DN32	1-1/4"	32.0	133.0	235.0	15.2	118.5	79.0	14.0	70.0	9.0	7.0
									50.0		
									F07		
DN40	1-1/2"	38.0	151.0	235.0	14.3	127.0	88.5	14.0	70.0	9.0	7.0
									50.0		
									F07		
DN50	2"	50.0	166.0	252.0	17.8	139.0	105.8	17.0	102.0	11.0	9.0
									70.0		
									F10		
DN65	2-1/2"	65.0	175.0	252.0	17.5	165.7	117.3	17.0	102.0	11.0	9.0
									70.0		
									F10		
DN80	3"	80.0	207.2	252.0	17.5	170.0	128.0	17.0	102.0	11.0	9.0
									70.0		
									F10		

unit:mm